

ASCOM Driver Installation for Apogee Cameras Using Maxim DL software

Applicable to Apogee CCD cameras

Initial considerations

ASCOM is a plug and play control interface for astronomy software and hardware. Here we discuss the setup for ASCOM control of Apogee CCD cameras from Andor Technology on Maxim DL software.

There are assumptions that the following has already been successfully installed:


Maxim DL software

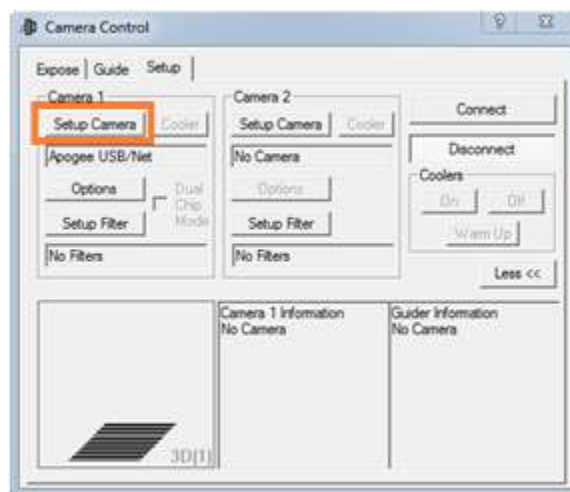
Apogee camera drivers ^[1] (Install instructions can be found in the **Apogee Driver Installation and verification test** technical document on the Andor Support website ^[2]).

ASCOM platform ^[3]

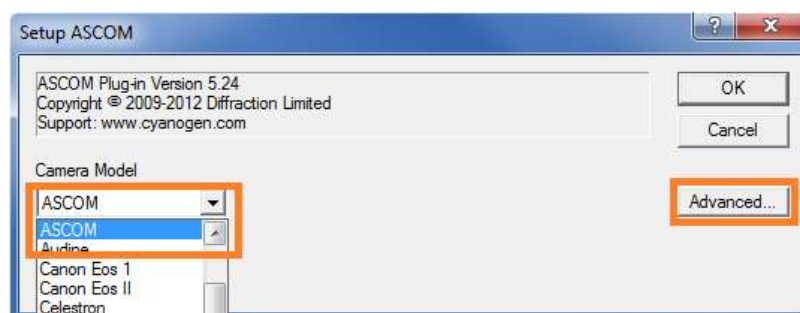
Apogee ASCOM driver ^[4]

Setup

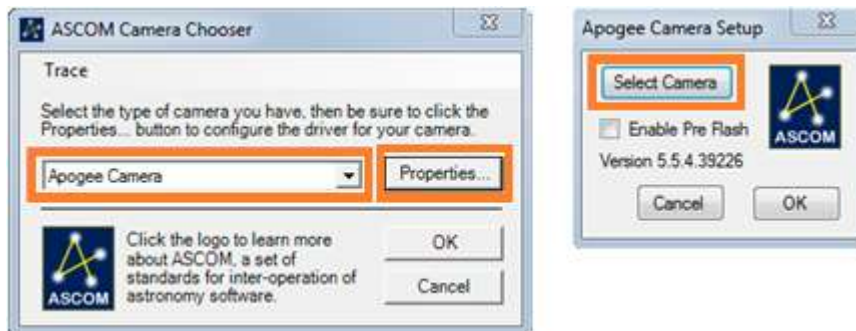
1. Start Maxim DL.
2. Open the Camera Control dialogue  and select *Setup Camera* from the *Setup* tab.



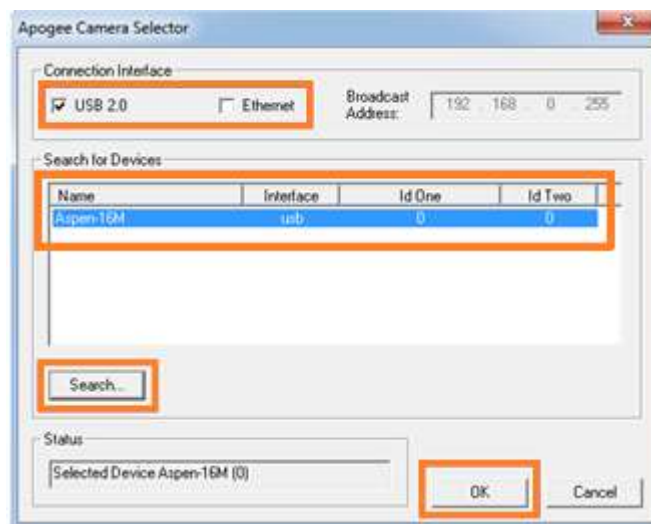
3. Select *ASCOM* from the *Camera Model* list and the “*Advanced...*” button to select the camera type.



4. Select *Apogee Camera* from the list, then *Properties*.
If the camera supports Pre Flash, enable the checkbox, then select the “*Select Camera*” button.

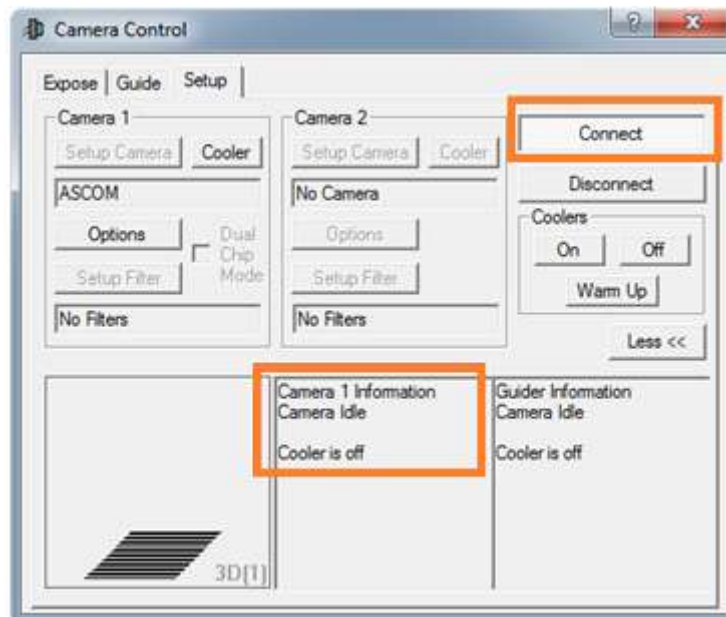


5. Choose the camera connection interface before pressing the “*Search...*” button. Select the camera that is returned in the search window and select *OK*.



6. Press *OK* in the *Apogee Camera Setup*, the *ASCOM Camera Chooser* and the *Setup ASCOM* windows to finalise the setup.

7. Press the “Connect” button in the Setup tab of the *Camera Control* menu to connect to the camera. If the connection is successful the camera information text should change from “No Camera” to “Camera Idle”.



If you require any further assistance, please contact your local Andor Support representatives ^[2].

Useful links

- ^[1] Andor driver pack for Apogee cameras – <http://www.andor.com/pdfs/software/apgSwInstall-x86.zip>
- ^[2] Product Support - <http://www.andor.com/ContactSupport>
- ^[3] ASCOM Website - <http://ascom-standards.org>
- ^[4] Andor Downloads and Drivers web page - <http://www.andor.com/downloads>